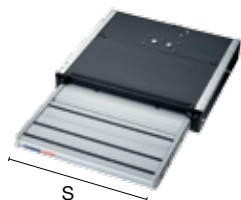


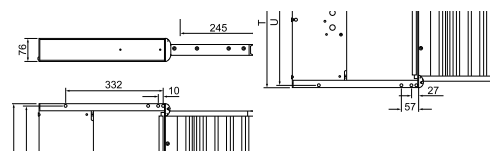
The Omni-Step is available in 3 manual and 3 motorised designs, all of which have different sizes. The manual step ladders have to be unfolded and folded by hand. The motorised versions are operated using a switch and conform to the EMV and CE standards. The formulated quality standards exceed European standard EN1646. A switch for the connection of a warning lamp in the vehicle is supplied as standard so that you would not be able to drive away with the step out. The corners of the step are rounded and give light in the darkness. Optional: For optimal visibility, your motorised Omni-Step (between 2003 / not for Slide out 700 and 12V double <2008) can be fitted optionally with a set of LED lights (#62 0002 00 - 1 set per step). A relay (#62 0000 00) with motorised steps ensures that the steps are folded up when the motor starts. The Step control box (#62 0023 00) can be installed as an option. This ensures that the steps are automatically folded and unfolded when the door is opened and closed. The steps are made of corrugated anodised aluminium, the fastening frame from aluminium or warm zinc plated steel.

With motor



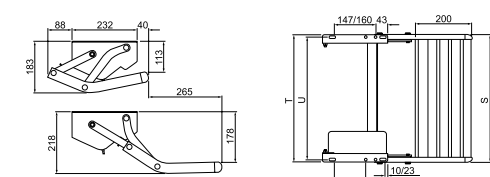
12V SLIDE-OUT 400, 550 & 700 ALU

| ART. NR. | TYPE | S (mm) | WEIGHT |
|------------|--------------------------|--------|---------|
| 20 2245 00 | 400 | 406 | 8.0 kg |
| 20 2254 00 | 550 | 551 | 9.3 kg |
| 20 2275 00 | 700 | 706 | 10.5 kg |
| 20 2248 00 | Mercedes Sprinter < 2006 | 406 | 9.8 kg |



12V 460 & 550 ALU

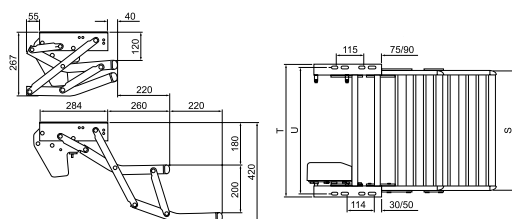
| ART. NR. | TYPE | S (mm) | WEIGHT |
|------------|------|--------|---------|
| 20 2147 00 | 460 | 455 | 5.70 kg |
| 20 2156 00 | 550 | 551 | 6.00 kg |



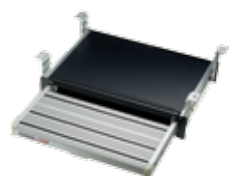
12V DOUBLE 380, 440 & 500 ALU

| ART. NR. | TYPE | S (mm) | WEIGHT |
|------------|------|--------|--------|
| 20 3338 00 | 380 | 380 | 7.0 kg |
| 20 3341 00 | 440 | 446 | 7.3 kg |
| 20 3350 00 | 500 | 502 | 7.6 kg |

The Omni-Step 12V double 380 fits the assembly holes of older types of Hymer B-class motorhomes.



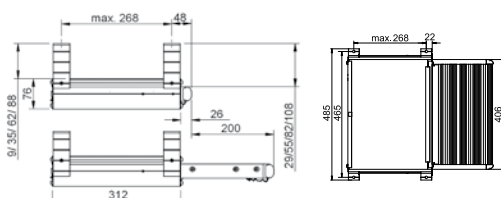
Manual



MANUAL SLIDE OUT ALU

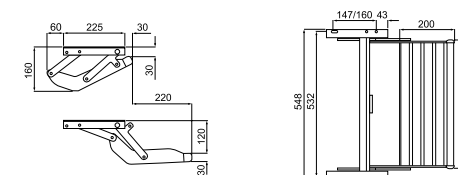
| ART. NR. | TYPE | S (mm) | WEIGHT |
|------------|------|--------|--------|
| 20 2340 00 | 400 | 406 | 4.7 kg |

The Omni-Step slide out manual is a unique sliding step for mounting on the caravan.



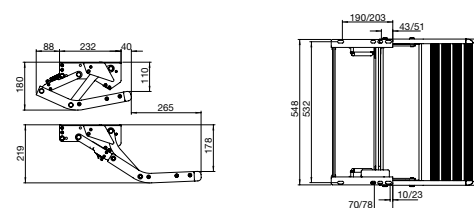
MANUAL 47

| ART. NR. | TYPE | S (mm) | WEIGHT |
|------------|------|--------|--------|
| 20 0000 00 | 47 | 468 | 5.2 kg |



MANUAL 550 ALU

| ART. NR. | TYPE | S (mm) | WEIGHT |
|------------|------|--------|---------|
| 20 2055 00 | 550 | 551 | 5.35 kg |



| | |
|------------|---|
| 62 0005 00 | Ducato, Jumper & Boxer (long wheel base) < 2007 |
| 62 0006 00 | Ducato, Jumper & Boxer ≥ 2007 |
| 62 0008 00 | Ford Transit model 2000 |
| 308 958 | Renault Master, Opel Movano, Nissan Interstar |
| 62 0011 00 | Mercedes Sprinter > 2007 and VW Crafter |

For the Mercedes Sprinter till 5/2006 a custom-made Omni-Step slide-out including the installation kit is available. (#20 2248 00).

