

GRIP SYSTEM

Anti-skid system



Anti-skid system with superior traction.

The two grips can be combined into one long piece to position under the motorcaravan's wheels.

Solid construction in UV-resistant polyethylene. Easy to clean.

97901-040

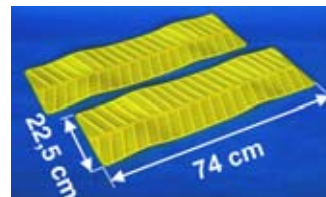
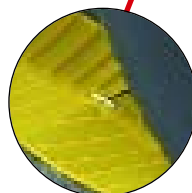
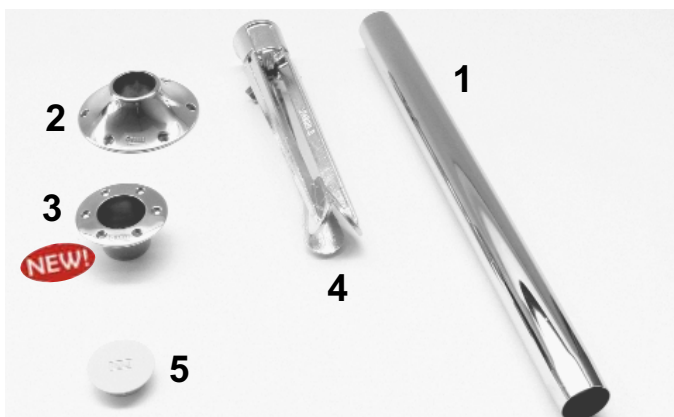


TABLE LEGS



A range of modular table legs ideal for making knockdown and revolving tables. Tubes made of chrome-plated steel available in the following lengths: cm 70 - 60. Conic and recessed connections are made of aluminium. Easy to assemble and disassembled.

The recessed connection is flush to the floor; special plastic cap to cover the hole available upon request. Standard delivered with self-threading fixing screws.

Convenient tripod base allows the table to be carried outside. It is standard delivered with an anti-closing device.



Tube 70 cm (1)	C0380-01-	
Tube 60 cm (1)	C0380-01A	
Conic Connection (2)	C5063-01-	
Recessed Connection (3)	C0331-01-	
Tripod (4)	00713-01-	
Cap (5)	02411-01B	

ALU STEP PRO



German Utility Model:
203 13 445.1



Step for caravans and motorhomes in anodized aluminium. Innovative system with folding legs for easy storage. When open they make the step very stable and sturdy. It carries up to 200 Kg. Large anti-skid surface. It weighs only 2.7 kg. Dimensions when closed:

45,5x33,6x3,8cm.
Opened:

45,5x33,6x21cm.

In accordance with EN1645-1646 regulations.
04316-01-

SAFE STEP



Non-skid cover to put on electric or manual steps of your motorhome. It is made in extruded aluminium and covered with a non skid UV-resistant rubber.

Keeps your motorhome clean. It can be installed with self-threading screws (not supplied). Colour: Black.

Available in 2 sizes:

Safe Step 410 cm 41x20 04509-01-

Safe Step 510 cm 51x20 04509A01-