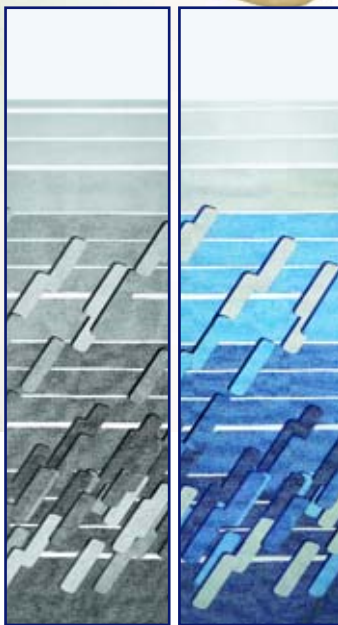




FIAMMASTOR



Test results show that it is the quickest awning to open and close



PLATINUM OCEAN

CARAVANSTORE	Awning length	Weight	Extension	
05238-01(X)	190cm	5.4kg	180cm	
05238A01(X)	225cm	7.1kg	225cm	
05238B01(X)	255cm	7.6kg	225cm	
05238C01(X)	280cm	7.8kg	225cm	
05238D01(X)	310cm	8.3kg	225cm	
05238E01(X)	360cm	9.5kg	225cm	
05238F01(X)	410cm*	10.1kg	225cm	
05238G01(X)	440cm**	10.7kg	225cm	

Specify the fabric colour you want in your order by replacing (X) with: **A = Platinum and B = Ocean**

* 1 tension Rafter in anodized aluminium included.

** 1 tension Rafter and 1 Rapid Set Pro included.

Type of awning Compact, lightweight and easy to operate. Horizontal and vertical support assembly slides into awning roller tube.

Major benefits: Specially designed for caravans, trailers, pop-ups, small campers and mobile homes.

Type of housing Housed in a soft bag with handy YKK self-lubricating zipper. No vibration when travelling.

Installation: Slides easily into the existing awning rail, supplied upon request. Easy to remove.

Fabric: Cool and cheerful, vinyl fabric with diffused lighting, hard-wearing and waterproof, with bright colours on both sides. Colour: Platinum or Ocean.

Extension: 225cm (180cm for 190cm awning)

Length: 190cm, 225cm, 255cm, 280cm, 310cm, 360cm, 410cm and 440cm.

Standard equip. Ground securing hooks. Rafter standard delivered from the 410cm model, 1 Rapid Set Pro in the 440cm.

Optional: Rafter (page 26), Blocker (page 34) and Rapid Set Pro (page 26).



@...I personally leave the awning attached to the Adria all the time except when I'll be taking a full awning away, or when I put the Caravanstore into a track at the back of the house as a canopy. It's the 2.9m one, and I have no problem putting it up and packing it away single-handedly. I also have a 1.8m one permanently attached to the side of my Landrover - makes a great dining shelter when we're camping with a tent! I have never had any problems with the awnings when travelling.

Neil

<http://groups-beta.google.com/group/uk.rec.caravanning>



"I easily use my Caravanstor at home and on the caravan. In this way I can use it the whole summer".

*Natalie Osadciw
Nuneaton, UK*